



TACOMA CENTRE

Executive Office Suite Solutions

TACOMACENTRE.COM



EXECUTIVE OFFICE SUITE SOLUTIONS



Tacoma Centre offers private office space with best-in-class amenities and flexible short-term options starting at 12 months. The small suites feature a turnkey solution for solo professionals and teams of 2 to 10, along with a dedicated conference room and tenant lounge.

[VIEW BUILDING VIDEO](#)

EXECUTIVE OFFICE SUITES INCLUDE

- Secure Wi-Fi via EERO
- Wi-Fi in Common Areas
- Secure Ethernet Connection
- Conference Rooms
- Tenant Lounge/Kitchenette
- Coffee & Snacks
- Access to all Tacoma Centre amenities including Ebony & Ivory Café & Wine Bar, The Tower Club Lounge, Vault, Board Room & Fitness Centre

DREW FRAME, SIOR
Executive Vice President
253.948.7032 | drew.frame@kidder.com

RYAN KERSHAW
Associate
206.949.1334 | ryan.kershaw@kidder.com



TACOMACENTRE.COM

This information supplied herein is from sources we deem reliable. It is provided without any representation, warranty, or guarantee, expressed or implied as to its accuracy. Prospective Buyer or Tenant should conduct an independent investigation and verification of all matters deemed to be material, including, but not limited to, statements of income and expenses. Consult your attorney, accountant, or other professional advisor.



2ND FLOOR PAVILLION SPEC SUITES

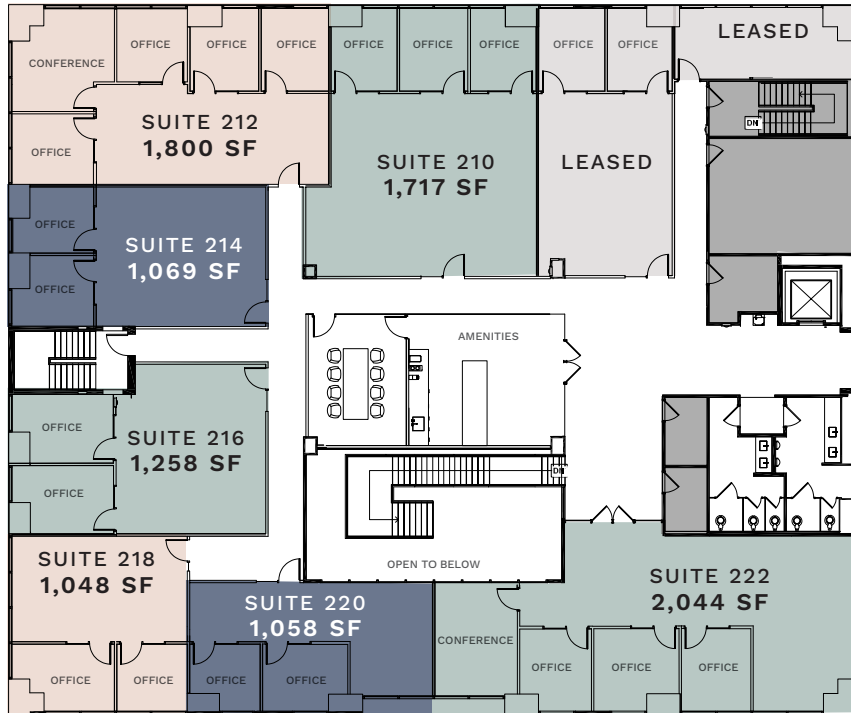
THEA FOSS WATERWAY

COMMENCEMENT BAY

MT. RAINIER

BROADWAY
(NORTH)

BROADWAY
(SOUTH)



SUITE 210 | 1,717 SF

\$5,200/Month, Full Service
3 Private Offices

SUITE 212 | 1,800 SF

\$5,100/Month, Full Service
4 Private Offices, 1 Conference

SUITE 214 | 1,069 SF

\$3,200/Month, Full Service
2 Private Offices

SUITE 216 | 1,258 SF

\$3,800/Month, Full Service
2 Private Offices

SUITE 218 | 1,048 SF

\$3,200/Month, Full Service
2 Private Offices

SUITE 220 | 1,058 SF

\$3,200/Month, Full Service
2 Private Offices

SUITE 222 | 2,044 SF

\$5,500/Month, Full Service
3 Private Offices, 1 Conference

DREW FRAME, SIOR
Executive Vice President
253.948.7032 | drew.frame@kidder.com

RYAN KERSHAW
Associate
206.949.1334 | ryan.kershaw@kidder.com



TACOMACENTRE.COM

This information supplied herein is from sources we deem reliable. It is provided without any representation, warranty, or guarantee, expressed or implied as to its accuracy. Prospective Buyer or Tenant should conduct an independent investigation and verification of all matters deemed to be material, including, but not limited to, statements of income and expenses. Consult your attorney, accountant, or other professional advisor.



2ND FLOOR SPEC SUITES

THEA FOSS WATERWAY

COMMENCEMENT BAY

MT. RAINIER



SUITE 204 | 2,347 SF

\$5,500/Month, Full Service
3 Private Offices, 1 Conference

SUITE 202 | 1,952 SF

\$4,500/Month, Full Service
1 Private Office, 1 Conference

DREW FRAME, SIOR
Executive Vice President
253.948.7032 | drew.frame@kidder.com

RYAN KERSHAW
Associate
206.949.1334 | ryan.kershaw@kidder.com



TACOMACENTRE.COM

This information supplied herein is from sources we deem reliable. It is provided without any representation, warranty, or guarantee, expressed or implied as to its accuracy. Prospective Buyer or Tenant should conduct an independent investigation and verification of all matters deemed to be material, including, but not limited to, statements of income and expenses. Consult your attorney, accountant, or other professional advisor.

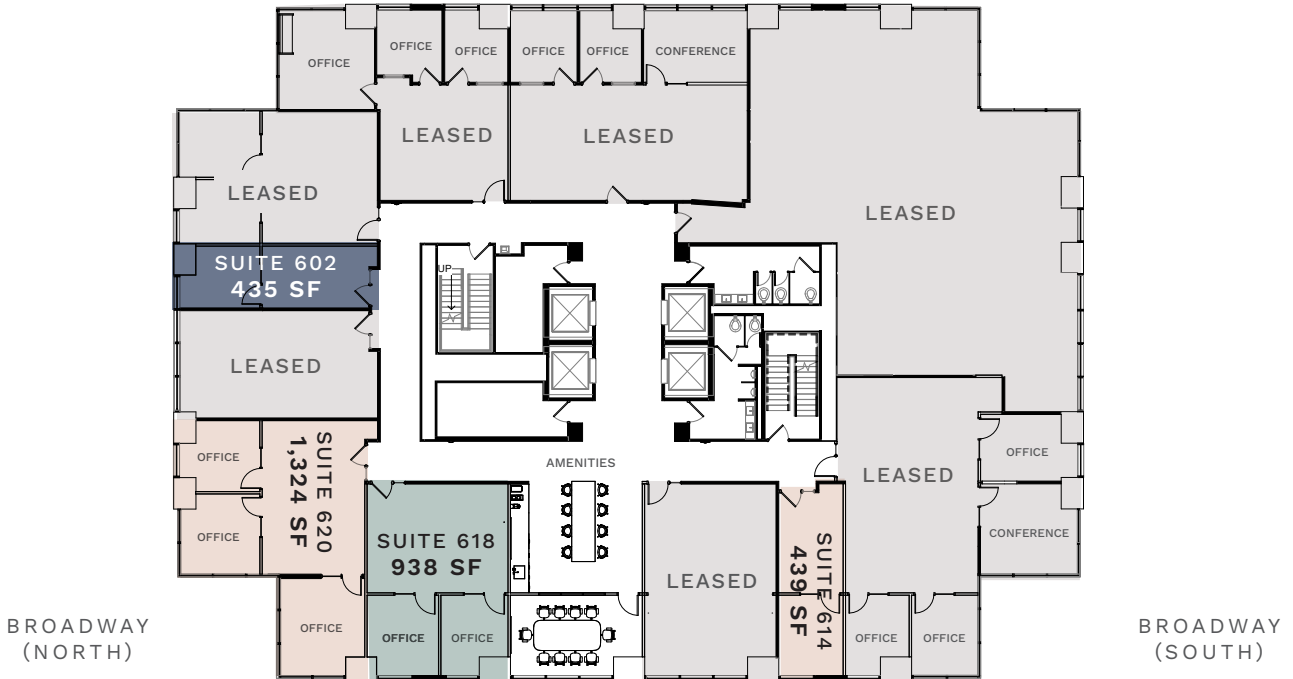


6TH FLOOR SPEC SUITES

THEA FOSS WATERWAY

COMMENCEMENT BAY

MT. RAINIER



SUITE 602 | 435 SF

\$1,600/Month, Full Service
1 Private Office

SUITE 614 | 439 SF

\$1,600/Month, Full Service
1 Private Office

SUITE 618 | 938 SF

\$3,400/Month, Full Service
2 Private Offices

SUITE 620 | 1,324 SF

\$4,200/Month, Full Service
3 Private Offices

DREW FRAME, SIOR

Executive Vice President
253.948.7032 | drew.frame@kidder.com

RYAN KERSHAW

Associate
206.949.1334 | ryan.kershaw@kidder.com



TACOMACENTRE.COM

This information supplied herein is from sources we deem reliable. It is provided without any representation, warranty, or guarantee, expressed or implied as to its accuracy. Prospective Buyer or Tenant should conduct an independent investigation and verification of all matters deemed to be material, including, but not limited to, statements of income and expenses. Consult your attorney, accountant, or other professional advisor.



TAKE ON TACOMA

Located on the most vibrant street in Downtown Tacoma, Tacoma Centre provides you with access to renowned restaurants, bars, gyms, parking, and retailers within steps of the front door.

Access to Tacoma Centre is unparalleled with immediate access to I 705, I-5, West Tacoma, and North Tacoma.



**WALKSCORE —
WALKER'S
PARADISE**



**ABUNDANT
PARKING WITHIN
WALKING
DISTANCE**



**1 BLOCK TO
COMMERCE
STREET LIGHT
RAIL STATION**



**ACROSS THE
STREET FROM
THE LUXURIOUS
HOTEL MURANO**



DREW FRAME, SIOR
Executive Vice President
253.948.7032 | drew.frame@kidder.com

RYAN KERSHAW
Associate
206.949.1334 | ryan.kershaw@kidder.com



TACOMACENTRE.COM

This information supplied herein is from sources we deem reliable. It is provided without any representation, warranty, or guarantee, expressed or implied as to its accuracy. Prospective Buyer or Tenant should conduct an independent investigation and verification of all matters deemed to be material, including, but not limited to, statements of income and expenses. Consult your attorney, accountant, or other professional advisor.